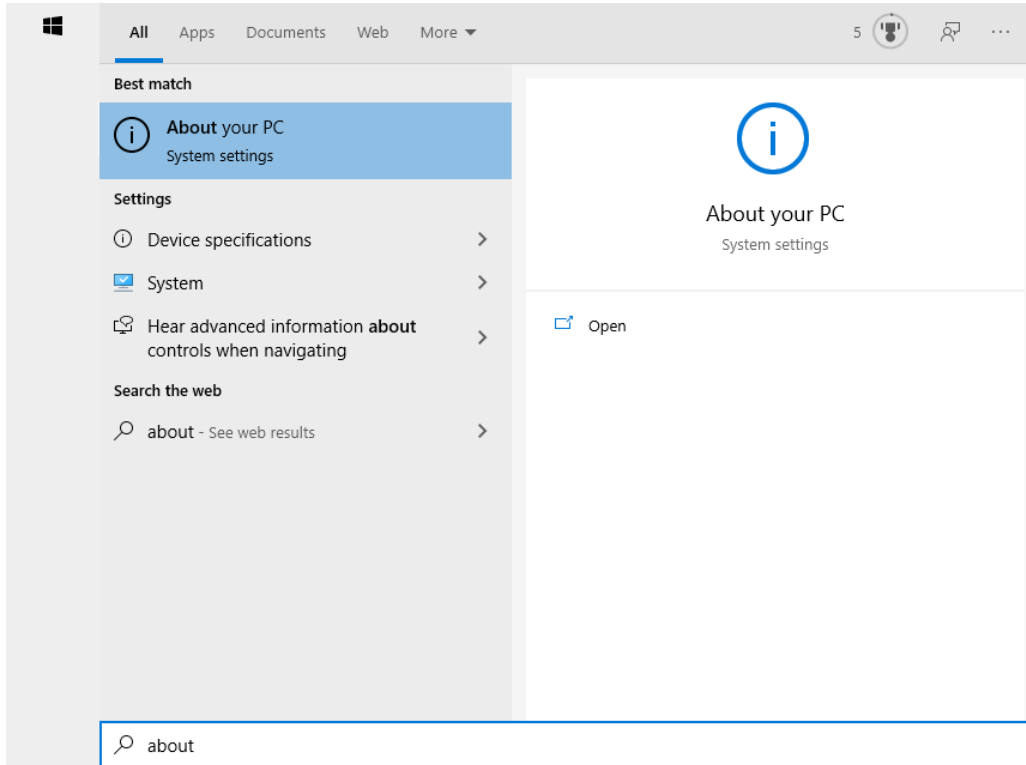


Choose the folder that matches your operating system.

(You can verify in Windows by pressing the windows key and typing "About Your PC" under System Settings).

*NOTE: The examples below are for a Windows 10, 64bit operating system



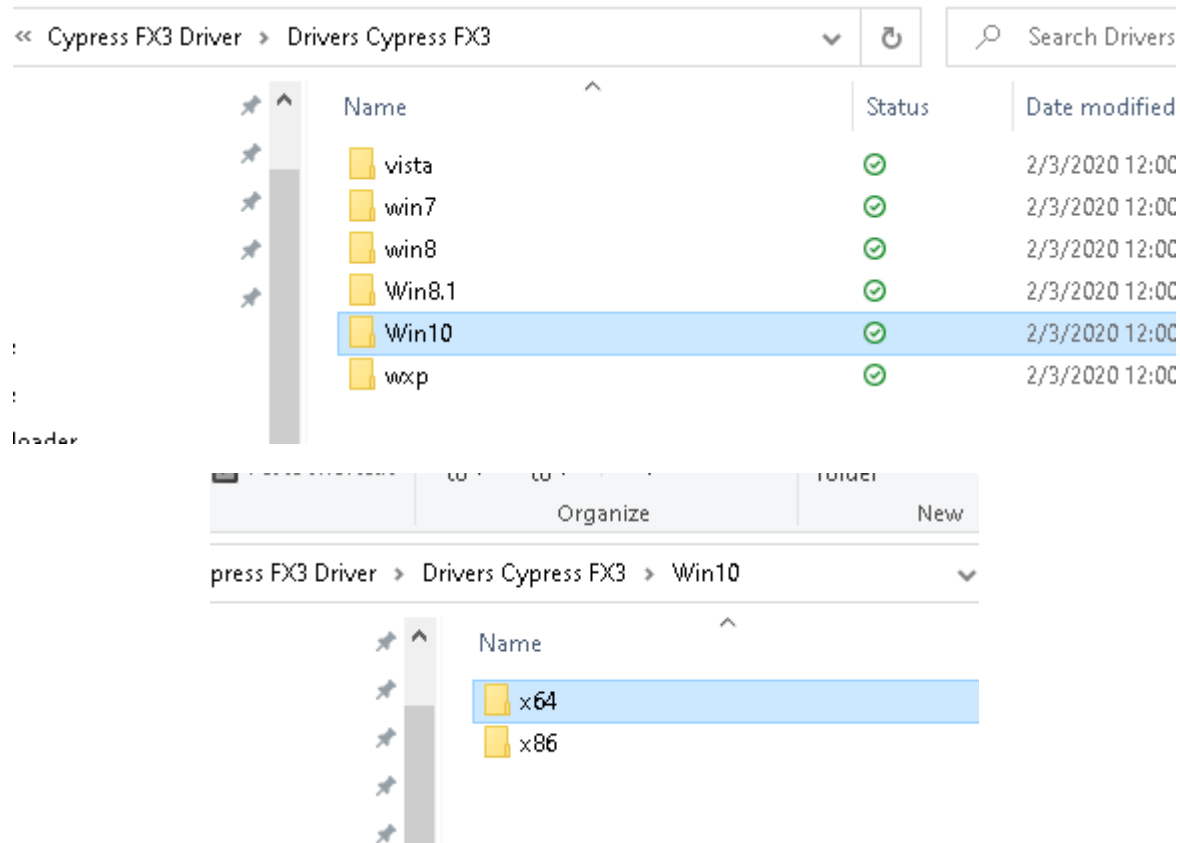
Device specifications

Device name	DESKTOP-ALGVDCA
Processor	Intel(R) Core(TM) i7-6600U CPU @ 2.60GHz 2.81 GHz
Installed RAM	16.0 GB (15.8 GB usable)
Device ID	8336A17-E061-4610-9125-710B910182C3
Product ID	0330-0183-51-0002-8848-16
System type	64-bit operating system, x64-based processor
Pen and touch	No pen or touch input is available for this display

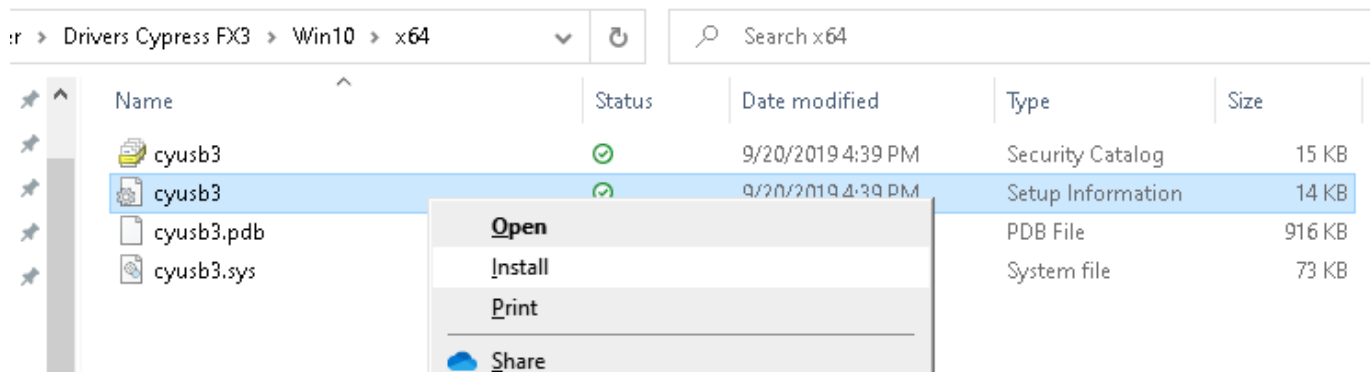
Rename this PC

Windows specifications


Edition	Windows 10 Pro
Version	19H2
Installed on	6/17/2019
OS build	19H2.1.19H2.1.19H2.1

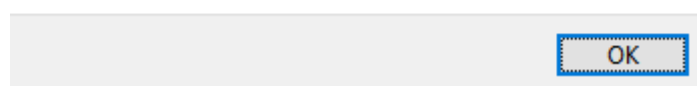


Right click on the ***cyusb3 Setup Information file*** and choose "Install"



You should receive a confirmation message once installed.

 The operation completed successfully.



Lined area for writing, consisting of multiple horizontal lines.

